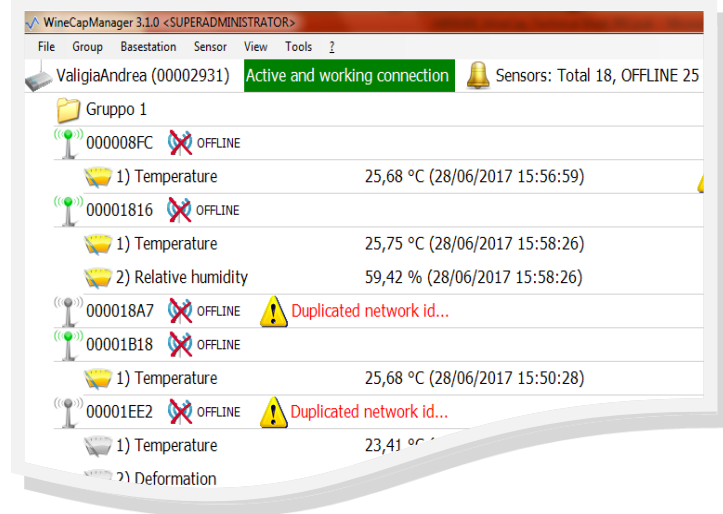




MAIN FEATURES

- Compatible with WSN basestations/gateways of **WINECAP™** product line.
- Tabular and graphical historical measures visualization, manual data export in CSV e XSL (*Microsoft Office 2007 or later*) format.
- Event summary with optional email notify to multiple users.
- **Probes/Dataloggers** wireless network (WSN) configuration (*insert/modify/delete*).
- Acquired data management, visualization and export.
- Multilanguage support (*italian/english*).
- System's acquired data upload to **Service Center** www.winecap.it (*Service Center access profile needed*)

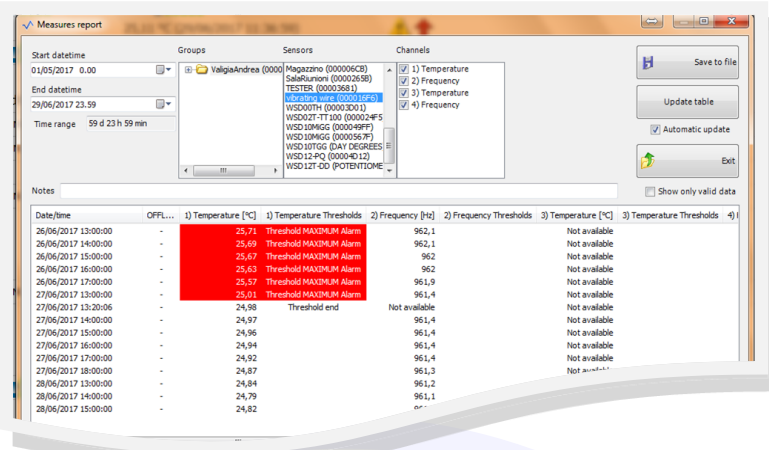


WINECAP™ wireless system software for management and configuration.

Software to be installed on a Windows PC (*Data Configuration and Exporting Tool*).

Manage **probes/dataloggers** configuration, diagnose the radio network, analyse and export (*schedulable*) data.

Can be used with all “M” series **basestations**, with all **WLI** and **WDG** models, with **WSD** and **SD** type **dataloggers** and **WSS** type **probes**.



WineCapManager can be used:

- *locally*, through direct connection with a USB cable
- *remotely*, through caller GSM modem
- *offline*, to manage, display, export historical data

The features shown may be subject to change without notice.