

## Technical Information

Calibrated magnitudes	<ul style="list-style-type: none"> <li>• Temperature</li> <li>• Temperature and relative humidity</li> </ul>
Report issuer	Producer
Temperature calibration points	<ul style="list-style-type: none"> <li>• -25°C, 0°C, +25°C (CAL-RP-TE)</li> <li>• +15°C, +20°C, +25°C (CAL-RP-TA/H)</li> </ul>
Relative humidity calibration points	30%/50%/70% (CAL-RP-TAH) (Isothermal point set to 23°C)



### Calibration service with Producer's report issuing.

Operation, performed in specific conditions, used for the instrument accuracy determination.

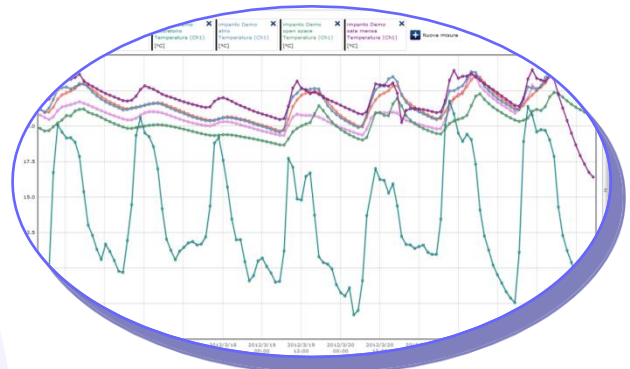
Through the calibration, any accuracy error can be corrected with actions that improve the performance or, if corrective actions are impossible, a calibration table is produced in order to improve the quality of the measurement.

The results of this operation are issued in dedicated reports:

- **CAL-RP-TE** -25°C, 0°C, +25°C
- **CAL-RP-TA** +15°C, +20°C, +25°C
- **CAL-RP-TAH** Temperature: 15°C, +20°C, +25°C  
Relative humidity : 30%/50%/70% (Isothermal point set to 23°C)

Calibration service also provides the replacement of batteries for devices involved in the operation.

Num punti	Temperatura di riferimento [°C]	Resistenza misurata [Ω]	Res. Rif. IEC 60751 (*) [Ω]	Differenza (Rmis - Rrif) [Ω]	Differenza (tmis - trif) [°C]	U - k=2 [°C]	TABULAZIONE R/Ohm = f(t/°C)
1	-24,93	90,190	90,221	-0,031	-0,012	0,05	R0: 99,956 Ω
2	0,00	99,956	100,000	-0,044	-0,017	0,05	A: 3,905E-03 °C <sup>-1</sup>
3	25,09	109,716	109,770	-0,054	-0,021	0,05	B: -5,774E-07 °C <sup>-2</sup>
4	49,94	119,307	119,374	-0,067	-0,026	0,05	C: 0,000E+00 °C <sup>-4</sup>
5	74,97	128,890	128,975	-0,085	-0,032	0,05	Alfa: 3,847E-03 °C <sup>-1</sup>
6	99,86	138,359	138,452	-0,093	-0,037	0,05	



The features shown may be subject to change without notice.