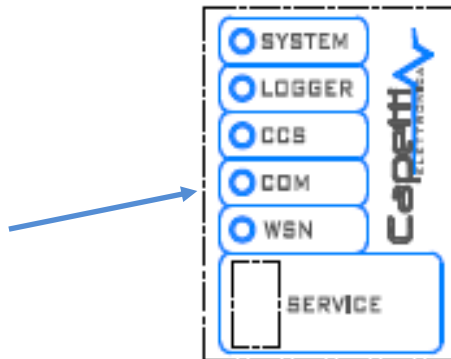


1. LAN Connection

To connect the **MWDG-ETH** to internet or to use it through the LAN, following operations must be performed:

- a. Power up the **MWDG-ETH basestation**;
- b. Connect the ethernet cable between the **basestation** and an available LAN port;

Connecting the LAN cable, the COM LED lights up in green to declare the successful connection



- c. Obtaining an IP address, by default, is performed through a call to the DHCP server. If the host network doesn't have the DHCP service set to active, passed a timeout period the Ip is automatically assigned (*AUTOIP*);
- d. In case a manual setup is needed, for example to set a static IP address, install and use the "*DeviceInstaller*" software to reach the **basestation** . Please refer to "*DeviceInstaller*" chapter.

2. Service Center Connection

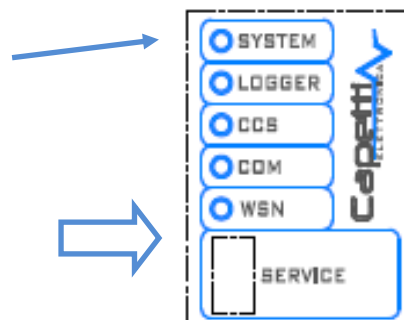
In order to obtain Internet access and download data to the **Service Center WineCap** (www.winecap.it) external server, the DHCP service or the manual setup of the network configuration must provide the insertion of the Gateway IP and DNS server useful for the external connection.

CONNECTION TEST: to verify the connection to the **Service Center** a command "4" must be issued: CCS connection Using the **WineCapKey**

- a. Approach the **WineCapKey** to the sensitive point. the SYSTEM led enlights in ORANGE;

ORANGE flash every 3 seconds

Approach the **WineCapKey**



- b. Wait for **4** ORANGE flashes keeping close the **WineCapKey**;
- c. Remove the **WineCapKey** to confirm the 4 command. Il CCS led lights up in green to show the connection in progress status.

- d. If the upload is successful, the CCS led turns off after few minutes. In case of malfunction the CCS led will turns in red.

3. Device Installer.

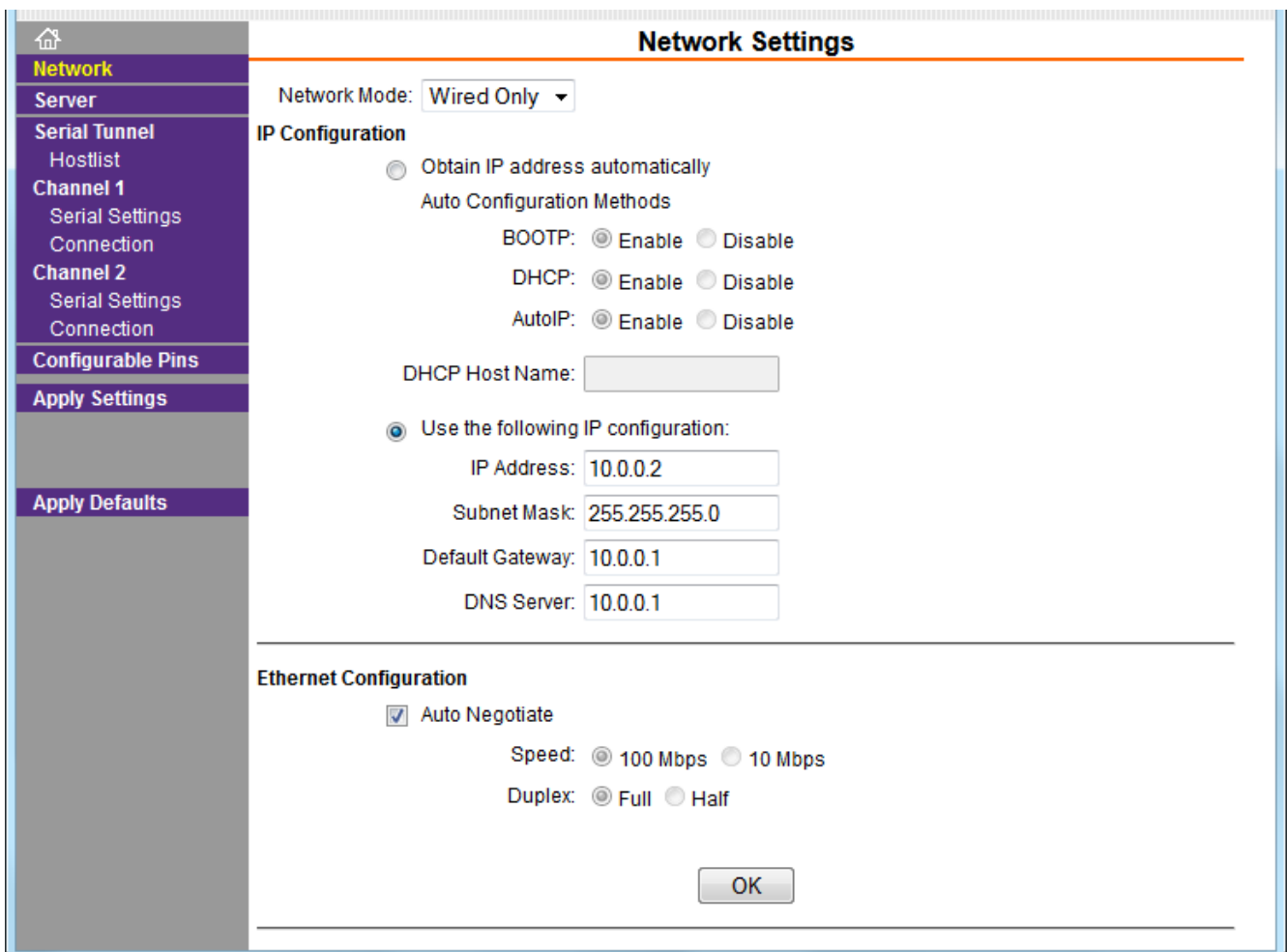
To know the IP address of the basestation, the management software named “DeviceInstaller”, contained on the provided setup CD Rom, must be installed;

- a. Connect the PC using the cable to the same LAN of the **MWDG-ETH**. Otherwise, a direct connection between the PC and the **basestation** can be setup (*using the ethernet cable*);
- b. Install and execute “DeviceInstaller” from Program menu, in the Lantronix directory;
- c. Select the Tools menu → Options and click on the proper network adapter (*typically is named “Local LAN Connection”*);
- d. Click on “Search” button;
- e. If the search is successful, in the device list will appear an element named “xPico”;
- f. Double click on the element; if a popup with a firewall exception appears, click on “Allow”;
- g. Click on this device the window “Web Configuration” can be selected. On the address bar the IP address of the module will appear;
- h. Click “send” from the address bar. Otherwise is possible to cut and paste this address on the PC browser;
- i. An authentication is requested: if user name and password are not set, leave these fields blank and click on “OK”;
- j. The “**Web Manager**” management page for ethernet peripherals will opens.

4. Web Manager.

Using “Web Manager” is possible to modify:

- a. **Device IP address:** click on “Network” from the menu located on the left and setup fields as desired:
 - i. Obtain IP address automatically: for automatic configuration
 - ii. Use the following IP configuration: to setup IP address, Subnet, Gateway and DNS in static mode.



Network Settings

Network Mode:

IP Configuration

Obtain IP address automatically

Auto Configuration Methods

BOOTP: Enable Disable

DHCP: Enable Disable

AutoIP: Enable Disable

DHCP Host Name:

Use the following IP configuration:

IP Address:

Subnet Mask:

Default Gateway:

DNS Server:

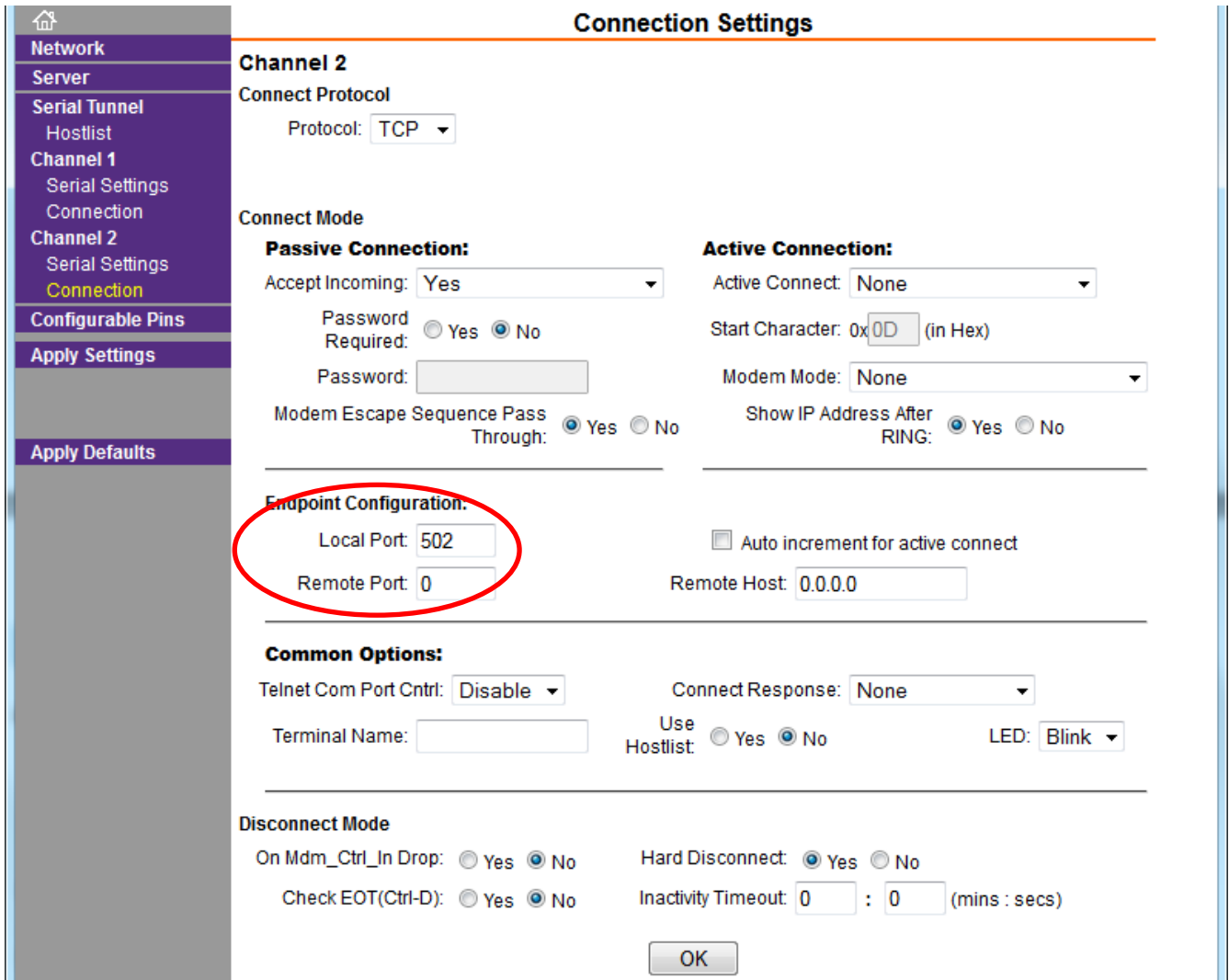
Ethernet Configuration

Auto Negotiate

Speed: 100 Mbps 10 Mbps

Duplex: Full Half

- b. Modify the **Modbus TCP port** to connect using the MODBUS RTU over TCP protocol. Click on “Connection” under “Channel 2”. Modify the **local port** only in the “Endpoint configuration” section, other parameters must not be modified. This allows to use the virtual COM port on TCP through a port enabled to communication. **ATTENTION: Local Port must be different from 23.**



Connection Settings

Channel 2

Connect Protocol
Protocol: TCP

Connect Mode

Passive Connection:
 Accept Incoming: Yes
 Password Required: Yes No
 Password:
 Modem Escape Sequence Pass Through: Yes No

Active Connection:
 Active Connect: None
 Start Character: 0x0D (in Hex)
 Modem Mode: None
 Show IP Address After RING: Yes No

Endpoint Configuration.
 Local Port: 502
 Remote Port: 0
 Auto increment for active connect
 Remote Host: 0.0.0.0

Common Options:
 Telnet Com Port Cntrl: Disable
 Connect Response: None
 Terminal Name:
 Use Hostlist: Yes No
 LED: Blink

Disconnect Mode
 On Mdm_Ctrl_In Drop: Yes No
 Hard Disconnect: Yes No
 Check EOT(Ctrl-D): Yes No
 Inactivity Timeout: 0 : 0 (mins : secs)

OK

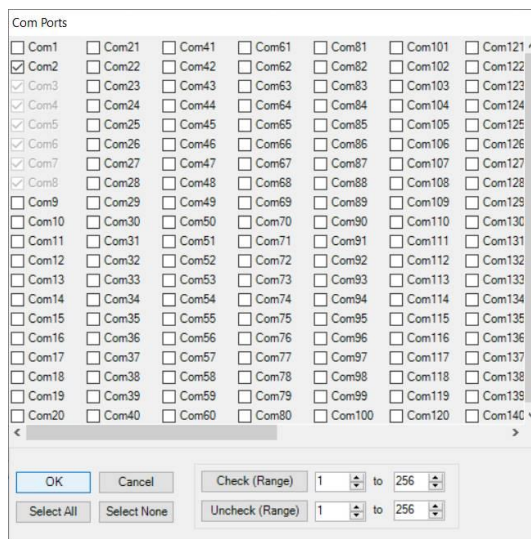
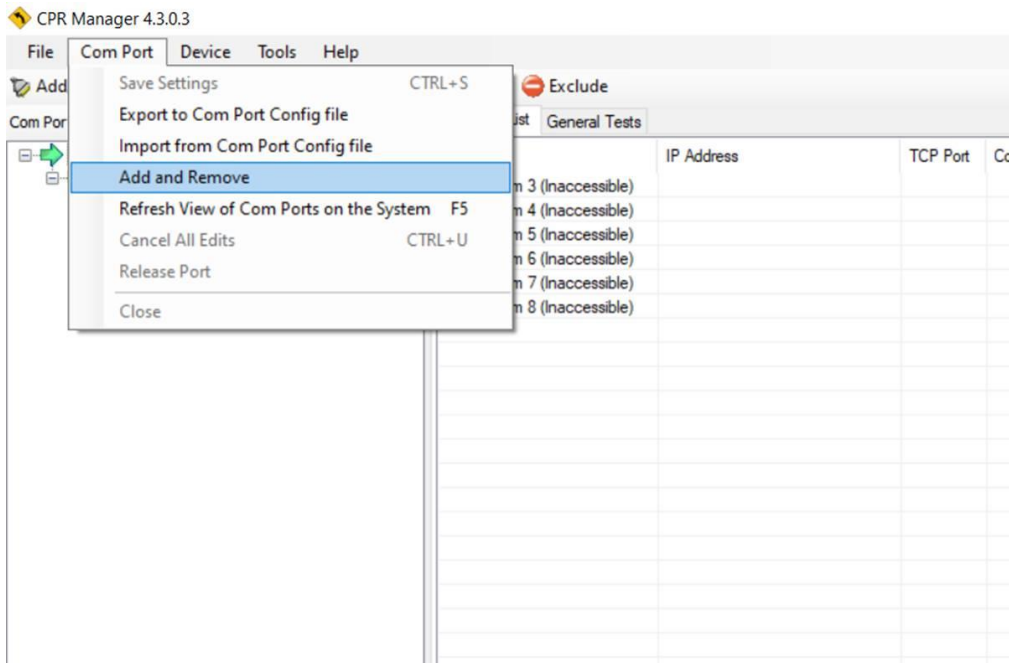
- c. Saving: every time a parameter is changed the “OK” button in the bottom of the page must be clicked. To apply all the changes and restart the ethernet peripheral click on the “Apply Settings” button. Wait for 30 seconds before using again the LAN connection.

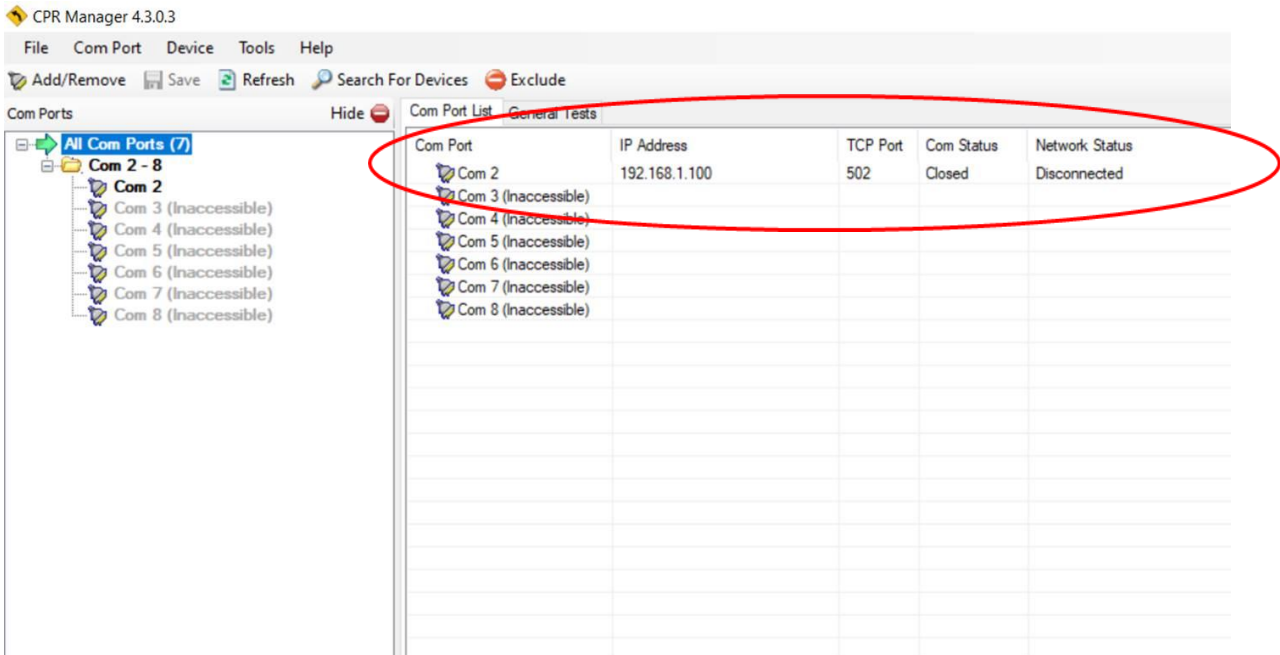
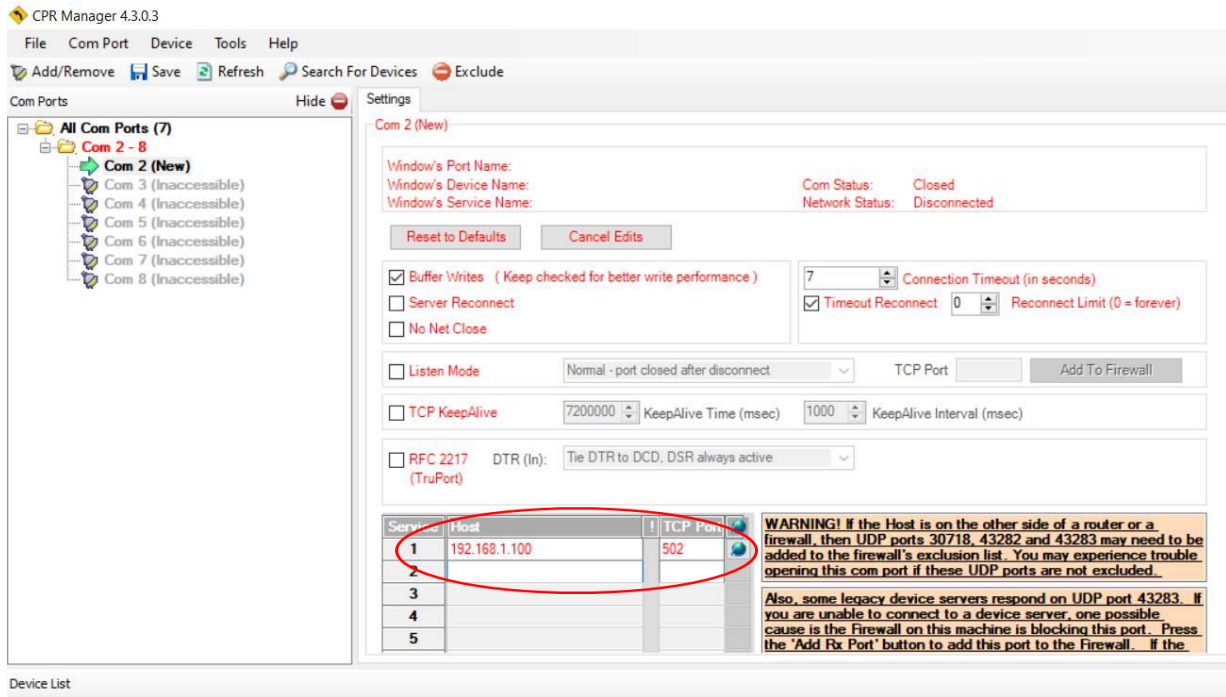
5. Com Port Redirector and WinecapManager.

MWDG-ETH can be used through the **WineCapManager** management software.

To use **WineCapManager** the "ComPortRedirector" software (*available on the provided CD Rom*) must be installed. After program installation, a virtual COMx serial port can be configured (*pay attention to don't configure an existing or busy port*) and addressed to the IP address and the Modbus TCP port where the **MWDG-ETH basestation** has been configured (*please refer to "WebManager" - chapter 2*).

ATTENTION: the basestation IP address must be reachable from the PC where the virtual COM will be installed.





When the setup is done, saving is necessary to make changes operative.

In the COM port list available on Windows a new port will appear, useful to connect to the **MWDG basestation** through **WineCapManager**.

When **WineCapManager** is executed, select "Local Connection" at the connection type prompt. The software check for all the COM ports available on the system, up to find a valid **MWDG** peripheral. If no problems are encountered on the LAN network, the basestation will be available.