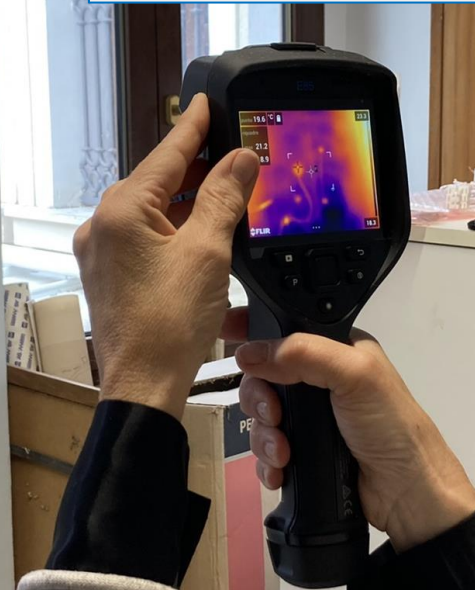
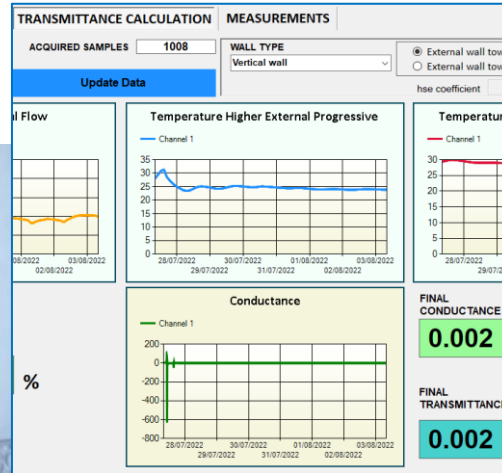
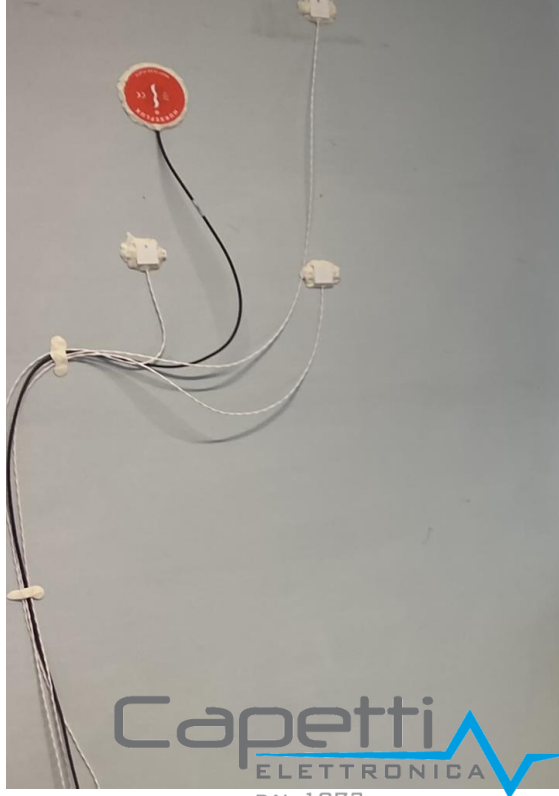
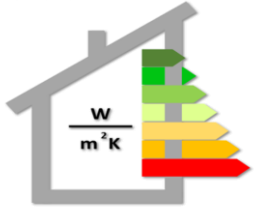


Buildings Monitoring

Energy loss



Background

CAPETTI Elettronica has always been mindful of climate change and the need to reduce polluting emissions, and ever since the company was established it has set the market standard when it comes to electronic instrumentation for capturing physical quantities. “*You only know what you measure*” was a saying by Lord Kelvin and CAPETTI has made it its own, employing this spirit to become a leader in measurements via temperature transducers - wireless dataloggers with Pt1000 sensors and integrated NTC delivering high precision, resolution, repeatability and reliability.

The solution

CAPETTI Elettronica designed the WSD12-TF wireless system to measure the thermal transmittance of the walls, which enables convenient, non-invasive calculation of the conductance using the heat flow meter method. This system is excellent assistance for building energy certification, as it enables the quick and easy measurement of external and internal surface temperatures, correlating them with heat flow linked to the dispersion of the wall itself.

The result

All measurements are recorded on the wireless dataloggers, sent to the WSN control unit and sent to the cloud where, via the WineCap™ Service Centre, the user can view graphs, print reports and export data through transmittance monitoring & analysis (TMA) software made available by Capetti with algorithms developed in collaboration with ENEA - nothing could be simpler!



WSD12-TF

The winning choice **WineCap**

- ✓ WSD12-TF (thermoflowmetric kit)
- ✓ CS PLUS FULL (TMA on Service Center)