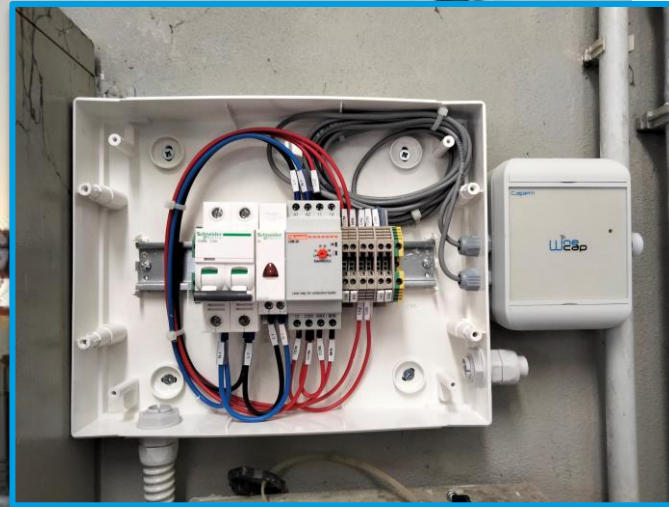


# Level Monitoring Service Stations



## Background

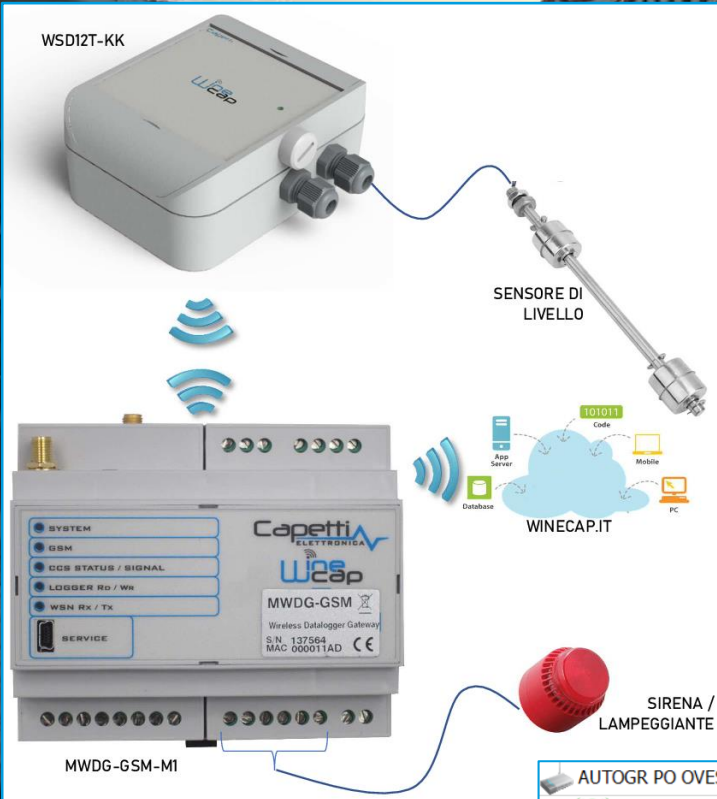
The distribution of domestic water in the network of service stations is managed by hydraulic pumps and tanks, whose level must be monitored continuously to detect operational issues and potential water leaks.

## The solution

The *WineCap™* solution enables system status to be monitored remotely by connecting the gateway to the Service Centre, and locally with the installation of an alarm/flashing light installed in the technical room.

## The result

Capetti Elettronica's wireless system adapts perfectly to monitoring requirements on the motorway network and in town outlets, as it promptly detects status and events changes involving water and electricity.



AUTOGR PO OVEST (0000BB3D) <span style="color: green;">Connessione attiva e funzionante</span>		🔔 Sensori: Totale 3, Offline 1	
📶 ALLARMI VASCHE (0000A770)	📶 7	📶 -96 dBm (RX)	📶 -80 dBm (TX)
🗑️ 1) Temperatura	24,25 °C (24/09/2021 16:17:45)		
🗑️ 2) Contatto	0 - (24/09/2021 16:25:13)	⚠️ ↓	
🗑️ 3) Contatto	1 - (24/09/2021 16:18:34)	🚫	
📶 RIPETITORE (00008CE4)	📶 7	📶 -76 dBm (RX)	📶 -80 dBm (TX)
🗑️ 1) Nodi	0 - (24/09/2021 15:39:50)		
🗑️ 2) Pacchetti	0 - (24/09/2021 15:39:50)		

**QUINTO**  
IMPIANTI

**Capetti**  
ELETTRONICA  
DAL 1973

## The winning choice

- ✓ WSD12T-KK (Outdoor temperature and 2 NC/NO inputs for status and alert integration)
- ✓ MWDG-GSM-M1 (Gateway for local management of system FAIL status and ALERT thresholds with 2 output relays)