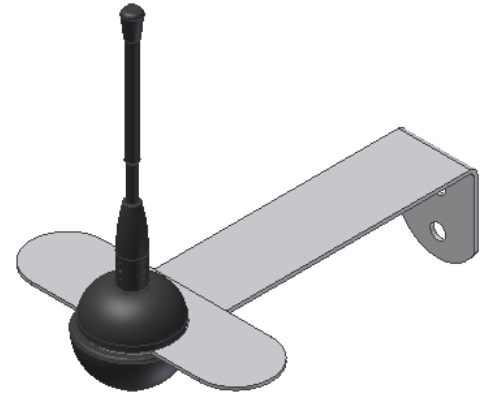


## Technical Information

Frequency	860 - 880 MHz
Impedance	50 Ω
V.S.W.R.	< 1,5 : 1
Maximum power	15 W
Polarization	Linear
Radiation	Omnidirectional
Gain	2,15 dBi
Dimensions	150x100x150 mm
Weight	0,230 kg
Cable	RG58 tinplated, 5 m
Working temperature	-40° / +80°C
Screws/clamp material	Stainless steel
Radiant element material	Steel, brass



### Ground plane 868 MHz antenna .

**ANT-EXT** is an omnidirectional antenna with pole/wall installation clamp, with brass cable/antenna connection, with stiff protection and hole for condensation drain.

- **Protection against electrostatic shocks:** protected against electrostatic shocks up to 12 kV.
- **Protection against oxidations:** designed to resist to adverse climate conditions and against component oxidation; clamp and screws are made in stainless steel meanwhile plastic components are made by raw materials resistant to external agents.
- **Protection against accidental strikes:** designed to protect people against protruding parts accidental strikes; Dedicated protections has been inserted for clamp and dial.
- **RoHS/2 directive :** compliant to RoHS/2 directive.



The features shown may be subject to change without notice.

WB05078E Rev.01